



SmartphoneFind 2.0

User's manual

Table of Contents

1. Introduction.....	4
1.1 System requirements	4
1.2 Technical support	4
2. Installation of SmartphoneFind.....	5
2.1 Useful Smartphone keys.....	5
3. Using SmartphoneFind.....	6
3.1 Your first search.....	6
3.2 Changing search options	7
3.4 Using advanced search functions.....	8
3.5 Support for 3 rd party applications	9
3.6 Tips and notes	9
3.6 Product registration.....	10
4. Uninstall SmartphoneFind.....	11

Copyright notice - Syncdata © 2006

The information contained in this document is correct at the time of going to press. We reserve the right to make changes to the Syncdata products referred in this document.

This document has 12 pages and was created in November 2006.

Microsoft, Windows, Windows Mobile, ActiveSync are either registered trademarks or trademarks of Microsoft Corporation in the U.S.A. and/or other countries.

1. Introduction

SmartphoneFind is a search tool for Windows Mobile Smartphone devices. SmartphoneFind enables users, using one single word or a part of it, to easily locate contacts, appointments, tasks, phone calls from Call history, messages and other information stored in the phone. Many search options are available to better refine the search.

1.1 System requirements

SmartphoneFind can be installed on Windows Mobile 2003 and Windows Mobile 5 Smartphone devices. Smartphone 2002 is not supported.

To install SmartphoneFind on your phone, you need:

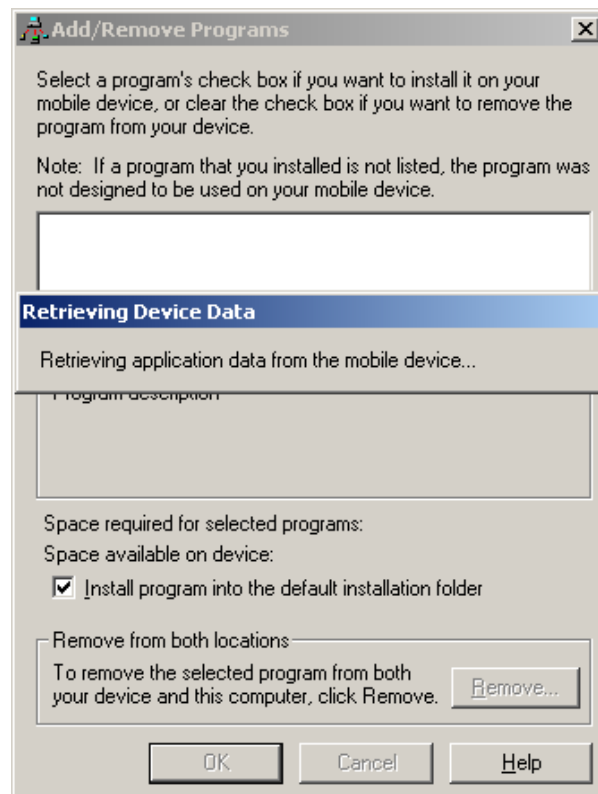
- Microsoft ActiveSync, version 3.7 or higher (4.0 required for Windows Mobile 5)
- PC: any PC and Microsoft Windows version supporting ActiveSync 3.7

1.2 Technical support

For installation problems and SmartphoneFind troubleshooting, contact technical support at: product.support@syncdata.it

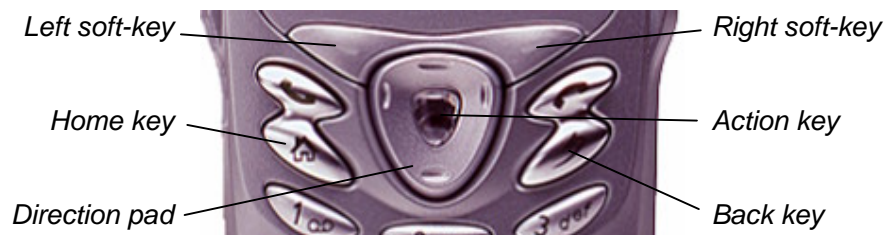
2. Installation of SmartphoneFind

1. Make sure your phone is connected to your desktop/notebook PC.
2. Run the setup executable (smartphonefindsetup.exe) you have downloaded from the Internet. Alternatively, you can download it here: <http://www.syncdata.it/download.html>.
3. On each window, click **Next** to advance to the next step; click **Back** to go back to the previous step.
4. At the end of the process you should see the ActiveSync Application Manager window. Follow the on-screen instruction to complete the installation on the phone.



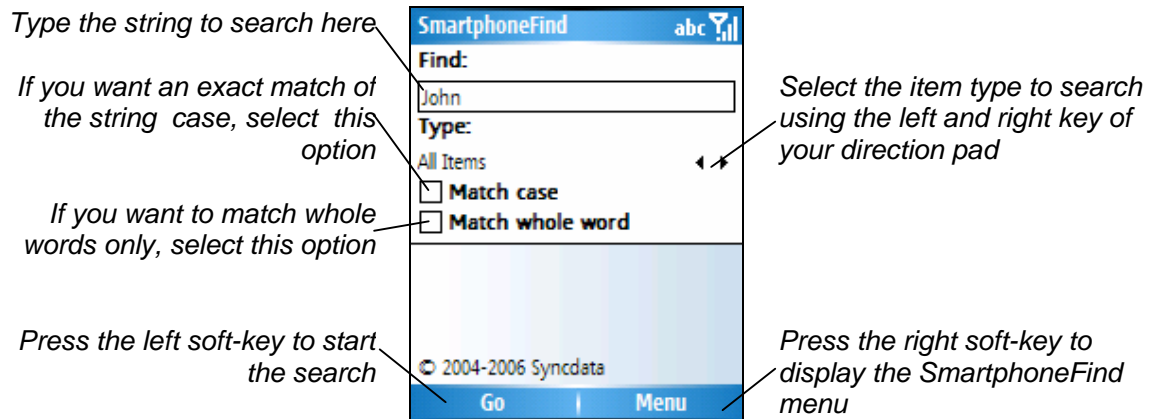
SmartphoneFind is now installed in your system. Click the **Finish** button to close the window.

2.1 Useful Smartphone keys



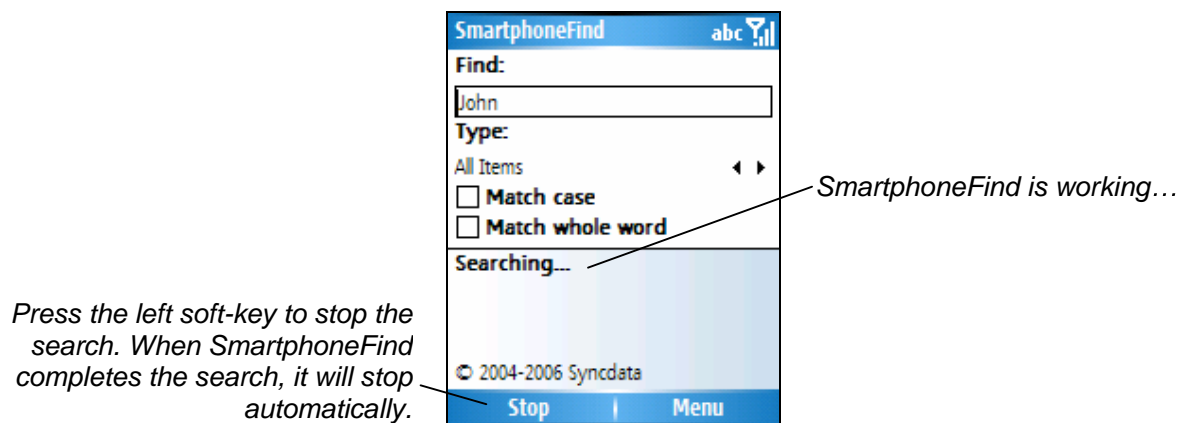
3. Using SmartphoneFind

1. From the Home screen of your Smartphone, press the left soft-key **Start** and browse the programs list until you find **SmartphoneFind**.
2. Use the action key to run SmartphoneFind.



3.1 Your first search

1. Insert a search string in the **Find** text box.
2. Select an item type in the **Type** field. Use the left and right key of your direction pad to select the type; or leave "All types" to search in all information data bases.
3. Press the left soft-key **Go** to start the search.



When the search is running, the left soft-key label changes to **Stop**. Press the left soft-key to break a long search operation.

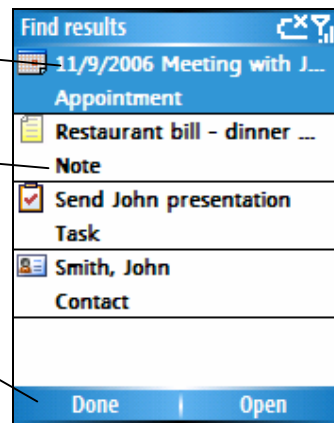
If there are no matches, a "**No items found**" message appears in the main window.

If there are items matching your search criteria, SmartphoneFind shows a list on the screen. You can browse the list using the up- and down- keys of the phone direction pad.

The first line is a short description of the item: the appointment subject, the contact display name...

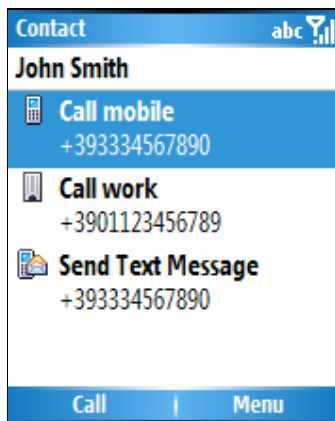
The second line is the item type

Press the left soft-key **Done** to close the list



Press the right soft-key **Open** to open the selected item. Or, press the action key. The screen will show you the item (screen may vary, depending on the item type).

To close the list and return to the main screen, press the back key, or press the left soft-key **Done**.



A contact card

Press the back key to return to the find results list.

3.2 Changing search options

To search for a specific item type, use the left- and right keys of the direction pad to browse the list of available item types. By default, the available item types are:

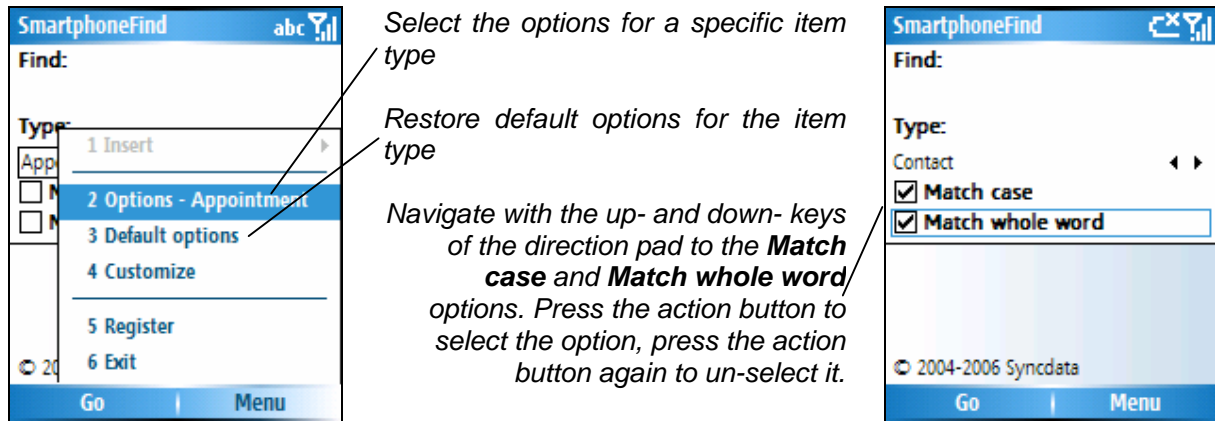
- Contacts
- Appointments
- Tasks
- SMS / Text messages
- E-mail messages
- File names
- Phone calls from call history
- Notes from SmartphoneNotes (if installed)

For each item type, you can also define specific search options. Press the right soft-key **Menu** and select **Options - ...**

Each item type has its own set of options. Use the options to better refine your search: for example, you could direct SmartphoneFind to search the Contacts database in the company-related information fields only.

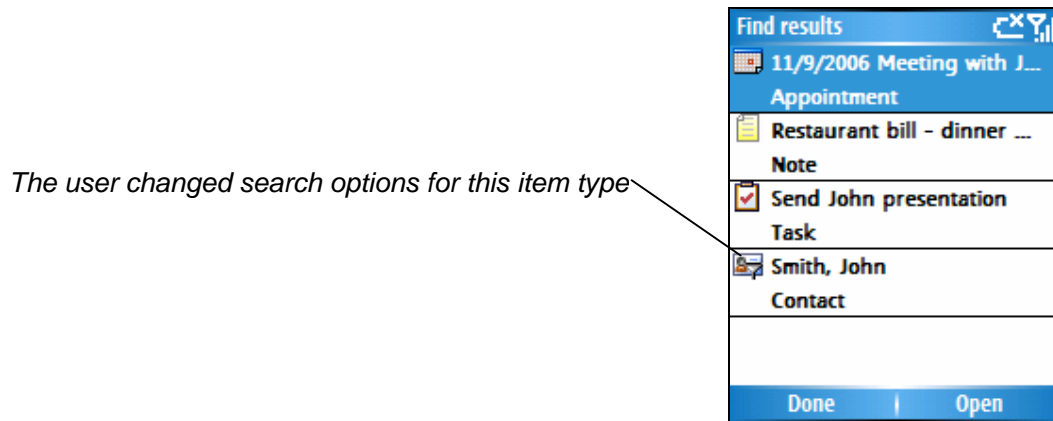
To restore the default options for the selected item type, choose **Default options** from the menu.

To perform a case-sensitive search, select the **Match case** option on the main screen:



① If you select **Default options** when **All Items** is the active item type, SmartphoneFind resets to default all available options.

If you changed the default options for an item type, a small "funnel" icon appears on top of the item icon in the "**Find results**" list:



3.4 Using advanced search functions

SmartphoneFind 2.0 introduces the possibility to use *wildcards* and *logical operators*.

Supported wildcards are '?' and '*':

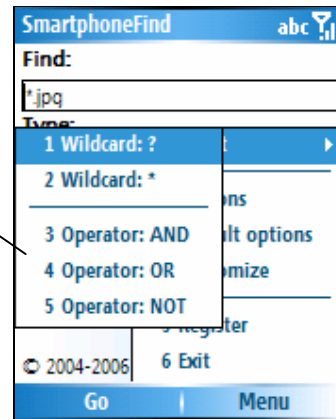
- ? : match any single character (Example: find "do?" - "dog" is a match; "do" is not a match; "dogs" is not a match).

- * : match any sequence of characters until the next separator (space or punctuation symbol) (Example: find "do*" - "dog" is a match; "do" is not a match; "dogs" is a match).

It is possible to combine several words using logical operators: AND, OR, NOT. Examples are:

- Bob OR Alice
- Sue AND birthday
- meeting AND NOT office

The **Insert** menu includes shortcuts to insert wildcards and logical operators.



To quickly insert a wildcard or an operator, use the **Insert** menu.

① An implicit OR is assumed if you type a list of words separated by spaces. For example, "cat dog" is equivalent to "cat OR dog".

3.5 Support for 3rd party applications

If you have a 3rd party application installed to manage tasks or appointments, you can use it to display the found items. The following applications are currently supported:

- Agenda one (<http://www.developerone.com>)
- Oxios Todo List (<http://www.oxios.com>)
- Papyrus (<http://www.sbsh.net>)
- Pocket Informant for Smartphone (<http://www.pocketinformant.com>)

To select the application to use for tasks or appointments, click the right soft-key **Menu**, select **Customize** and browse the available options (only available applications are listed).

3.6 Tips and notes

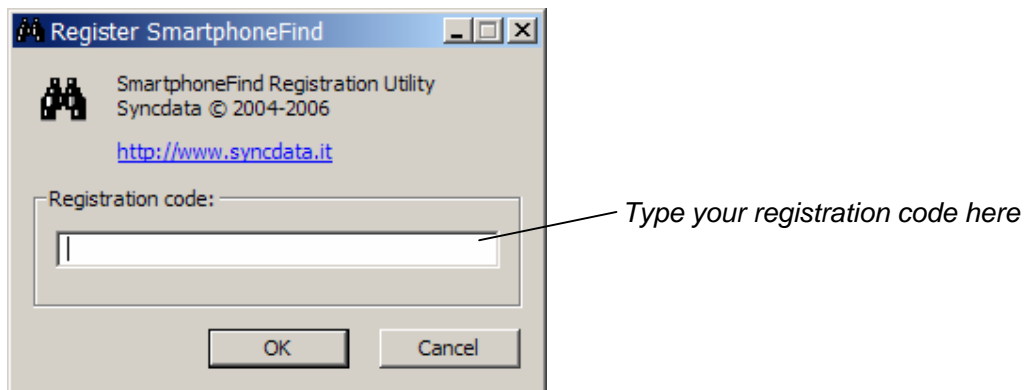
- Several item types can be searched in the date fields: examples are Appointments, Tasks, Messages and SMS. Use the short date format of the selected Locale for your phone. The Locale can be changed from the **Regional Settings** panel under **Settings** menu.
- SmartphoneNotes is required to search for text notes. Visit <http://www.syncdata.it/sphnotes.html> to learn more about SmartphoneNotes.

3.6 Product registration

SmartphoneFind can be used for evaluation purposes for 30 days, free of charge. If you purchase a license to use SmartphoneFind after the end of the trial period, you must insert the registration code received with your purchase. Press the right soft-key **Menu** and select **Register**: the registration screen displays the label "Unregistered copy". Press the left soft-key **Register** to type the registration code; then press the right soft-key **Done** to save the code, or press the left soft-key **Cancel** to close the screen without saving the code.

It is easier to insert the registration code from the desktop. To register from the desktop, you use a registration utility, automatically installed when you run the SmartphoneFind setup program.

1. Connect your Smartphone to the computer.
2. Click **Start** on your desktop / notebook computer.
3. Select **Programs** and look for the **SmartphoneFind** submenu.
4. From the SmartphoneFind submenu, select **Insert registration code**. This command will start the registration utility.



5. Type the registration code in the text box. Click **OK** to close the registration utility. The registration code is copied to your Smartphone.

ⓘ To avoid mistakes copy and paste the registration code instead of typing it in the registration window

4. Uninstall SmartphoneFind

To uninstall the phone SmartphoneFind from your Smartphone:

1. Disconnect the phone from your desktop or notebook computer.
2. From the Home screen, press the left soft-key **Start** and browse the list until you find the **Settings** icon.
3. Press the action key to run the Settings program, and browse the list of available settings up to the **Remove Programs** application.
4. Press the action key to display the list of programs that can be uninstalled and select **Syncdata SmartphoneFind**.
5. Press the action key again: SmartphoneFind will be uninstalled from your phone.

To remove SmartphoneFind from your desktop / notebook computer:

1. Click the **Start** menu and select **Control Panel**
2. Run the **Add or Remove Programs** application.
3. Browse the list of the currently installed programs and select **SmartphoneFind (remove only)**.
4. The uninstall program will remove SmartphoneFind from your desktop or notebook computer.

